

Uprooted: Japanese American Farm Labor Camps During World War II

Major Sponsors

Oregon Cultural Heritage Commission
Four Rivers Cultural Center
National Park Service, Japanese American Confinement Sites Grant Program
Idaho Humanities Council
Malheur County Cultural Trust

General Supporters

Japanese American Citizens League, Boise River Valley Chapter
Japanese American Citizens League, Snake River Valley Chapter
Oregon Historical Society
Sandy Polishuk
Constance Schulz
Dr. Gus and Teddy Tanaka
Yas Teramura

Photograph Sponsors

Gwyneth Gamble Booth
David A. Horowitz and Gloria E. Myers
Mary Akiko Ouchida Takami and Janet Takami Koda
Dr. Bob and Janet Komoto
Janet Learmonth and Walter Wakefield
Lola Maria Marquez Milholland and Theresa Marquez
David Milholland
The Orr Family
Gus Van Sant
Philip H. G. Wikelund and Gloria D. Brown
Russell Yamada

1942 Russell Lee FSA Photographs: The Camp Sites



OCHC Lee #001 Farm labor camp, Garrison's Corner near Nyssa, Malheur County, Oregon.

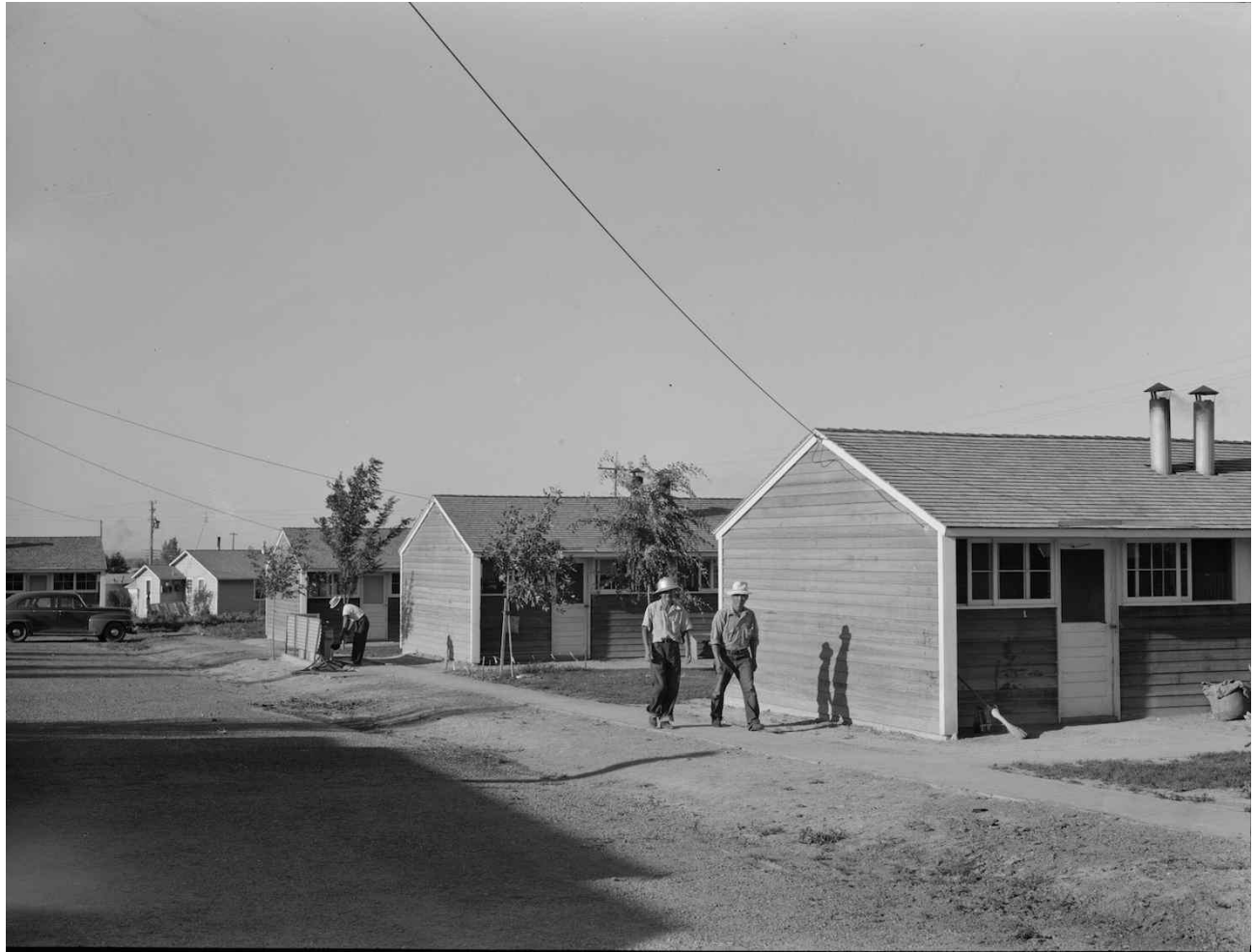
Nyssa, Oregon. Farm Security Administration mobile camp now inhabited by Japanese Americans who volunteered to do farm work. The U.S. Employment Service and the local sugar beet companies made agreements as to wages, working conditions, transportation, recreational facilities and medical care. *Library of Congress, Prints & Photographs Division, FSA-OWI Collection, LC-USF34-073574-D.*

Sponsored by Russell Yamada in memory of Kimiko Fujii Yamada



OCHC Lee #002 Farm labor camp near Shelley, Bingham County, Idaho.

Shelley, Idaho. Farm Security Administration mobile camp. Japanese farm workers are now living at the camp. *Library of Congress, Prints & Photographs Division, FSA-OWI Collection, LC-USF34-073778-D.*



OCHC Lee #003 Farm labor camp near Twin Falls, Twin Falls County, Idaho.

Twin Falls, Idaho. Farm Security Administration farm workers' camp. Row shelters in which the Japanese live. *Library of Congress, Prints & Photographs Division, FSA-OWI Collection, LC-USF34-073771-D.*



OCHC Lee #004 Farm labor camp near Rupert, Minidoka County, Idaho.

Rupert, Idaho. Former Civilian Conservation Corps camp now under Farm Security Administration management. The Japanese Americans beautify the grounds. *Library of Congress, Prints & Photographs Division, FSA-OWI Collection, LC-USF34-073909-D.*



OCHC Lee #005 Tents at the Garrison's Corner camp near Nyssa, Oregon.

Nyssa, Oregon. Farm Security Administration mobile camp. Ordinarily electricity is not supplied to the tents of migrant families living in the FSA camps. These Japanese-Americans, who were accustomed to better living conditions, wanted the electricity and the sugar beet companies and the town of Nyssa arranged for the wiring. Some of the wiring is the Christmas tree light wiring from Nyssa. *Library of Congress, Prints & Photographs Division, FSA-OWI Collection, LC-USF34-073349-D.*



OCHC Lee #006 Tent home at the Garrison's Corner camp near Nyssa, Oregon.

Nyssa, Oregon. Farm Security Administration mobile camp. Tent home of Japanese-American family living at the camp. *Library of Congress, Prints & Photographs Division, FSA-OWI Collection, LC-USF34-073602-D.*



OCHC Lee #007 Laundry room at the Garrison's Corner camp near Nyssa, Oregon.

Nyssa, Oregon. Farm Security Administration mobile camp. Laundry room. *Library of Congress, Prints & Photographs Division, FSA-OWI Collection, LC-USF34-073694-E.*